

No Notice Mass Casualty Response Plan

IED ATTACKS

- **Inside Toyota Center**
 - Backpack IED (3)
 - 2000 hrs
 - 8 Fatalities, 150 Major Injuries, 500 Minor Injuries
- **Outside Toyota Center**
 - VBIED (Small)
 - 2015 hrs
 - 63 Fatalities, 600 Major Injuries, 3800 Minor Injuries
- **Toyota Tundra Garage**
 - VBIED (Large)
 - 2018 hrs
 - 13 Fatalities, 34 Major Injuries, 9 Minor Injuries
- **Bell St. METRORail**
 - Backpack IED (1)
 - 2020 hrs
 - 22 Fatalities, 258 Major Injuries, 260 Minor Injuries
- **Ben Taub ER**
 - VBIED
 - 2020 hrs
 - 8 Fatalities, 26 Major Injuries, 166 Minor Injuries



PROJECT DELIVERABLES

- A no notice response protocol for EMS and medical first responders to include:
 - ✓ Develop activation and dispatch procedures
 - ✓ Define tiered response guidelines
 - ✓ Develop local staging and security procedures
 - ✓ Incorporate and promote regional triage guidelines
 - ✓ Integrate onsite treatment processes
 - ✓ Coordinate transport procedures
 - ✓ Identification of non-traditional transport assets.
 - ✓ Develop demobilization procedures

HFD Tiered Response

Activation Level	Patients (Red or Yellow)	Send
Level 1	10-20	5 Ambulances 2 Engines 1 Supervisor
Level 2	20-50	10 Ambulances 5 Engines 2 Supervisors
Level 3	50-100	25 Ambulances 10 Engines 3 Supervisors

Regional Tiered Response

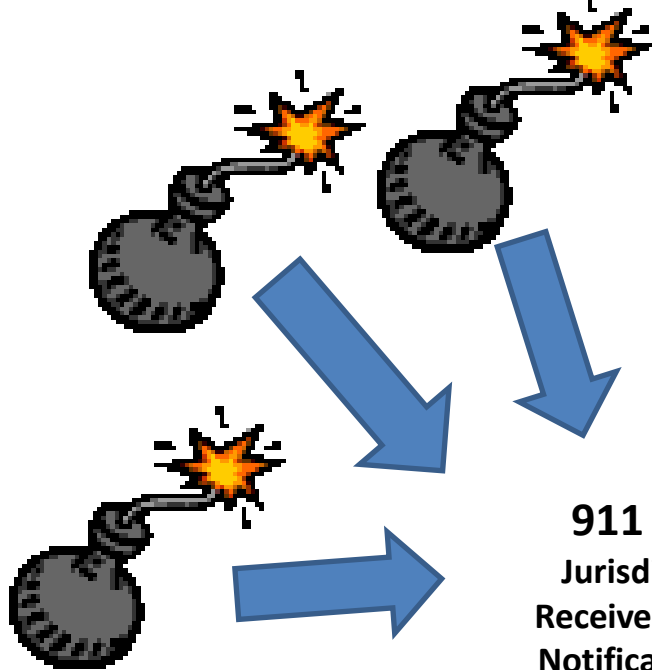
Activation Level	Patients (Red or Yellow)	Send
Level 1	10-20	1 Strike Team 1 Ambus (Optional) 8 Responders
Level 2	20-50	2 Strike Teams 1 Ambus 20 Responders
Level 3	50-100	5 Strike Teams 2 Ambus 40 Responders
Level 4	100-250	Activate Regional Plan 10 Strike Teams 3 Ambuses 80 Responders Consider State MOU Activation
Level 5	Greater than 250	Additional 10 AST's , 4 Ambus & Activate State MOU's

*Additional resources can be added as deemed necessary

Tiered Response

- Regional Plan does not replace simple mutual aid
- Activation of Regional Plan will vary by jurisdiction, for example...
 - HFD at Level 4
 - MCHD at Level 2
 - Rural County at Level 1

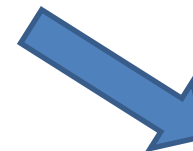
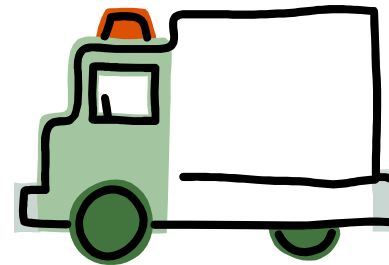
Initial Notification & Resource Request

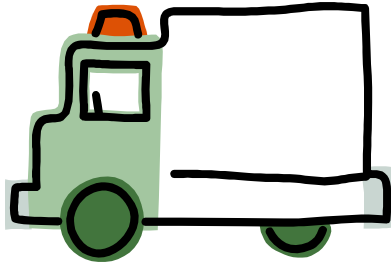


911 Call
Jurisdiction
Receives Initial
Notification of
IED Explosions

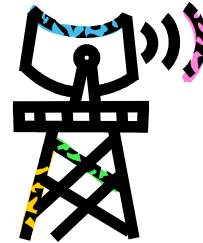


Local 911 Dispatch
Dispatches Local Resources



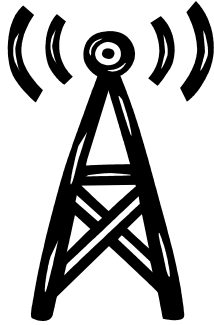
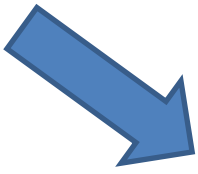


**Local Assets
Arrive**
Declare Mass
Casualty and
Request Regional
Plan Activation



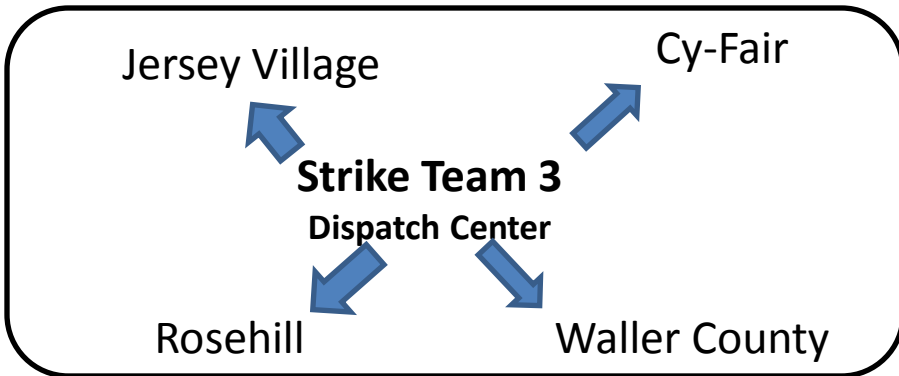
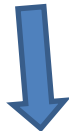
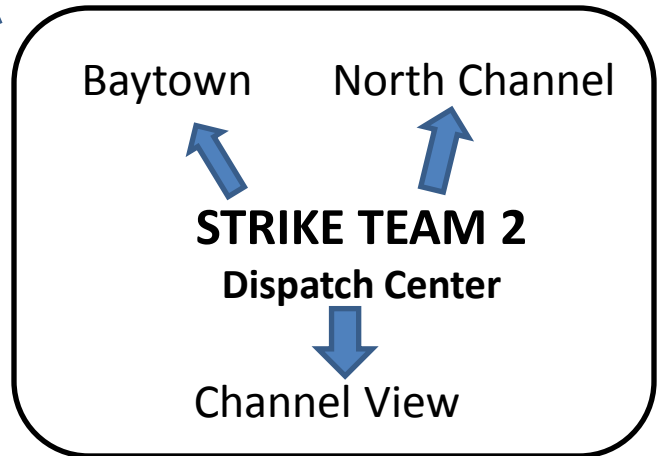
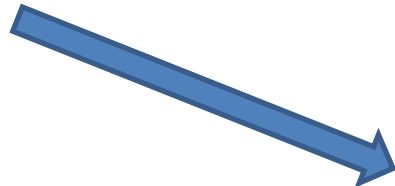
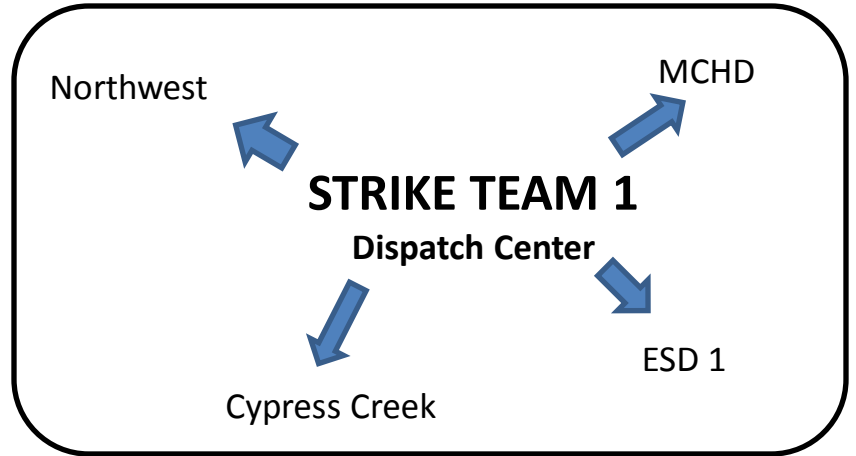
**Local 911
Dispatch**
Activates Plan
Notifies Regional Dispatch
Center to request
Ambulance Strike Teams

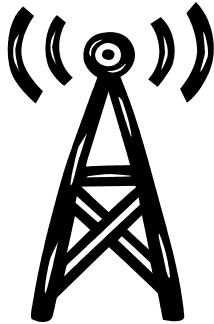
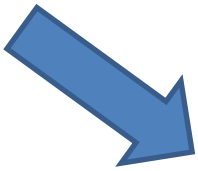




Regional Dispatch Center

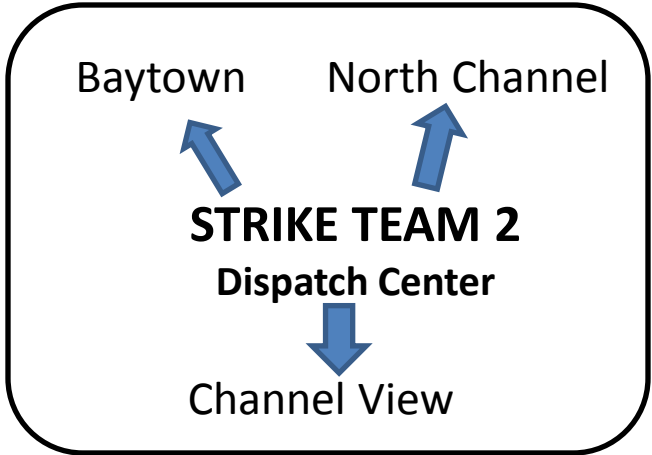
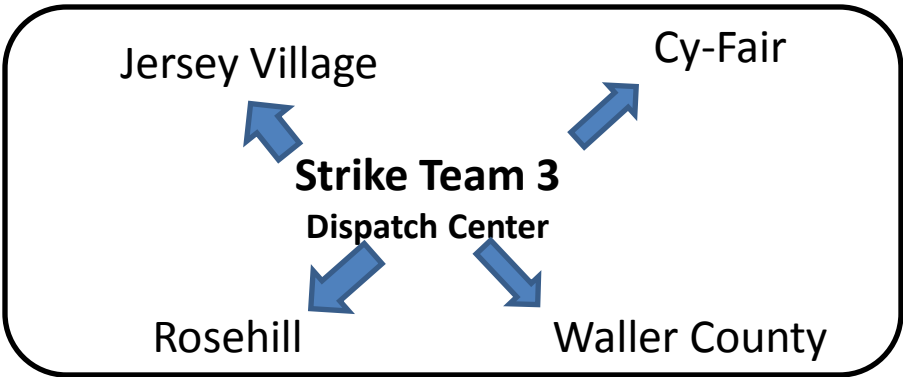
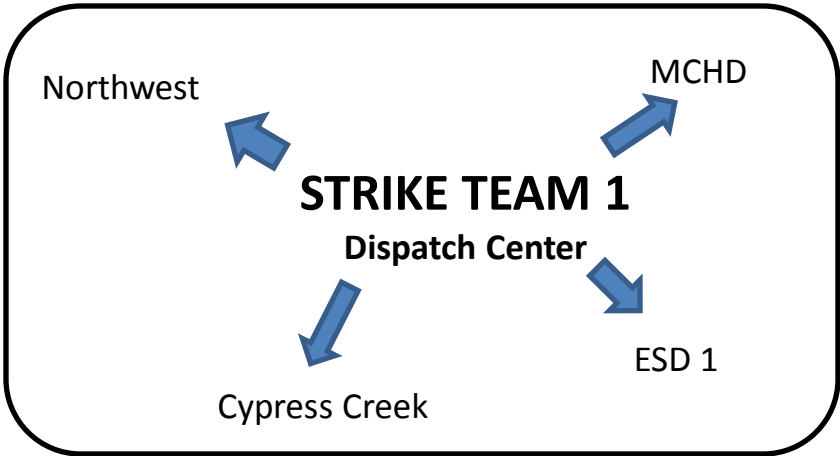
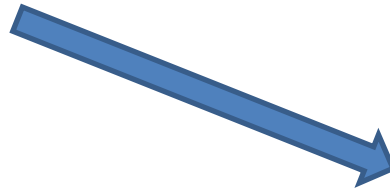
Activates Predefined Strike Teams through Other Local Dispatch Centers



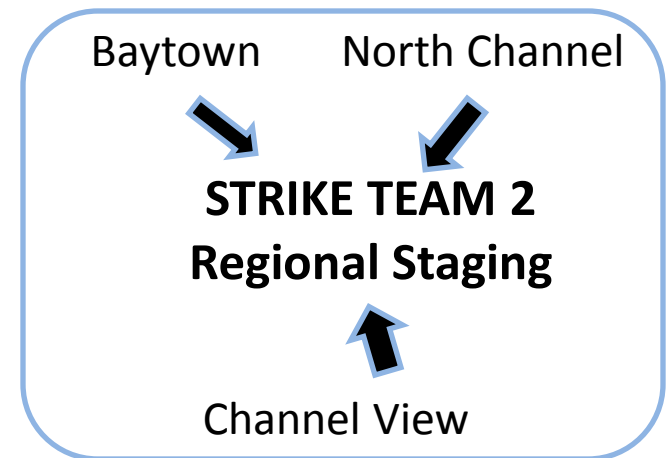
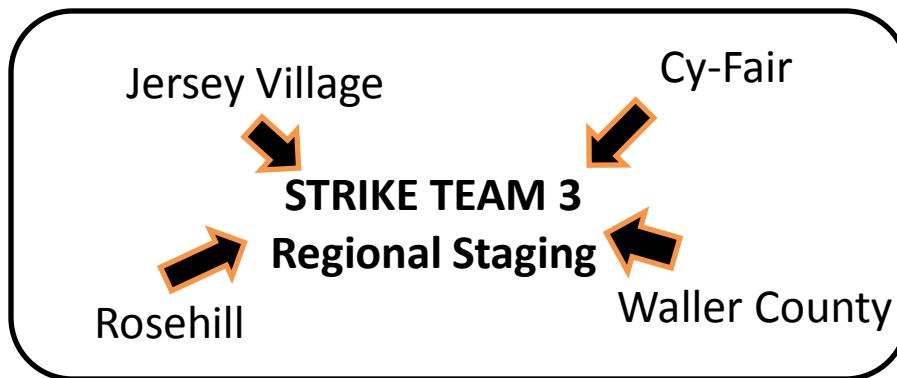
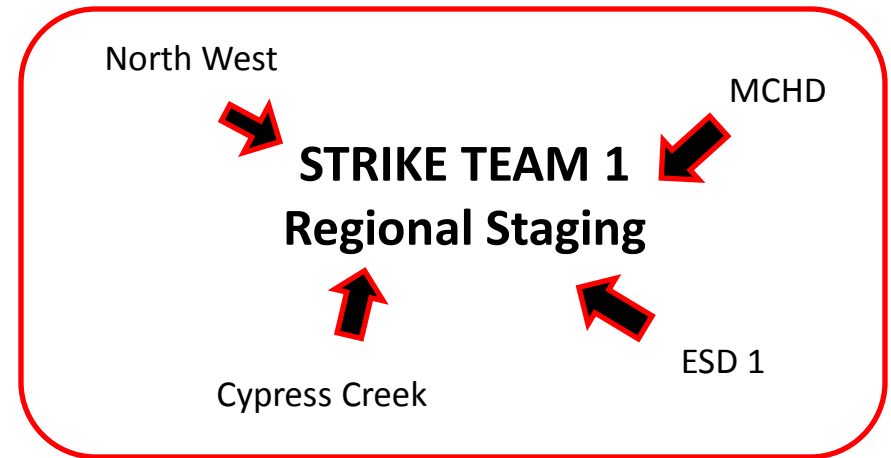


Regional Dispatch Center

Activates Predefined Strike Teams through Other Local Dispatch Centers

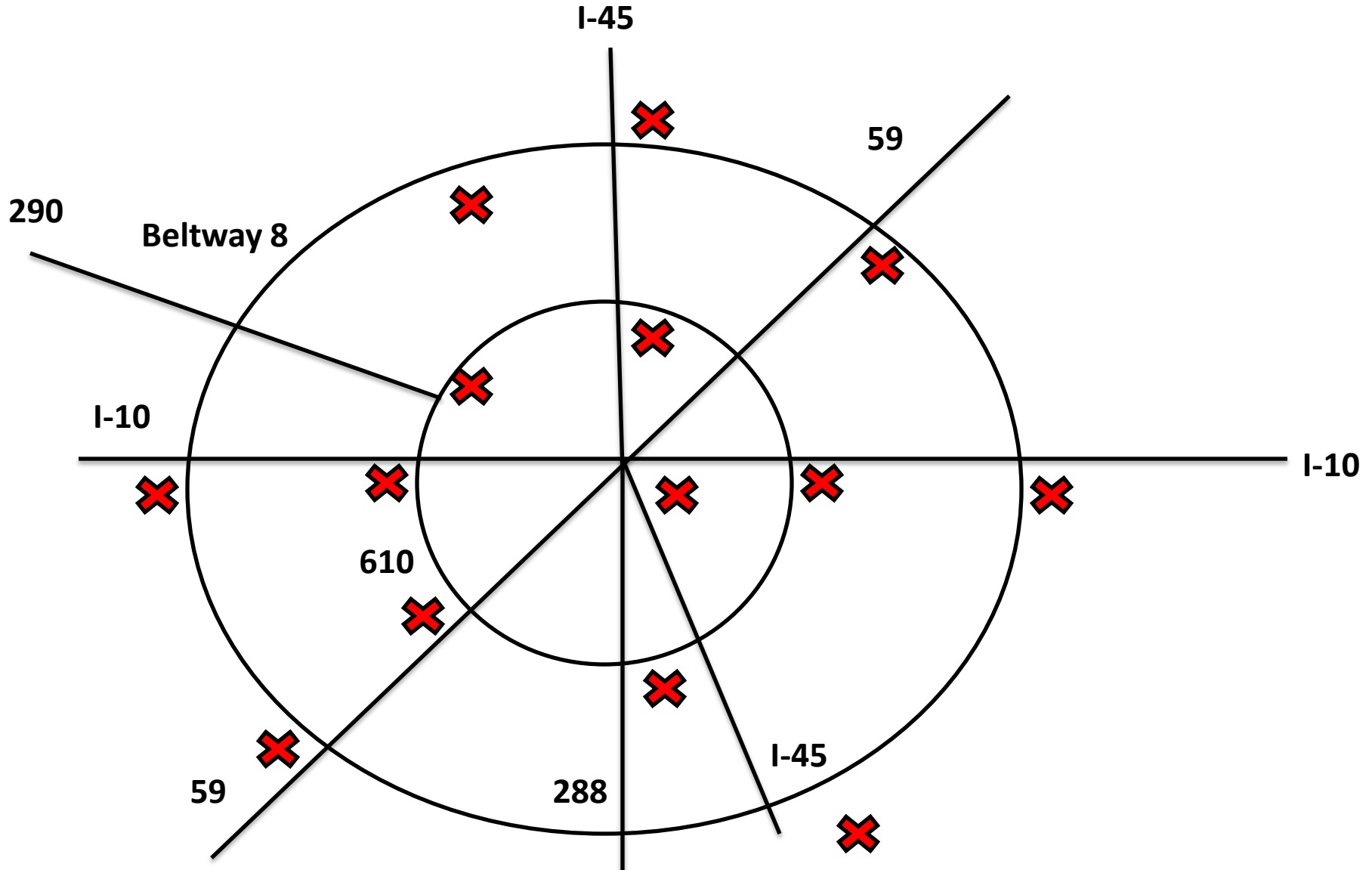


Ambulance Strike Teams
(5 Ambulances and One Supervisor)
Move to REGIONAL STAGING
and Report Ready for
Assignment

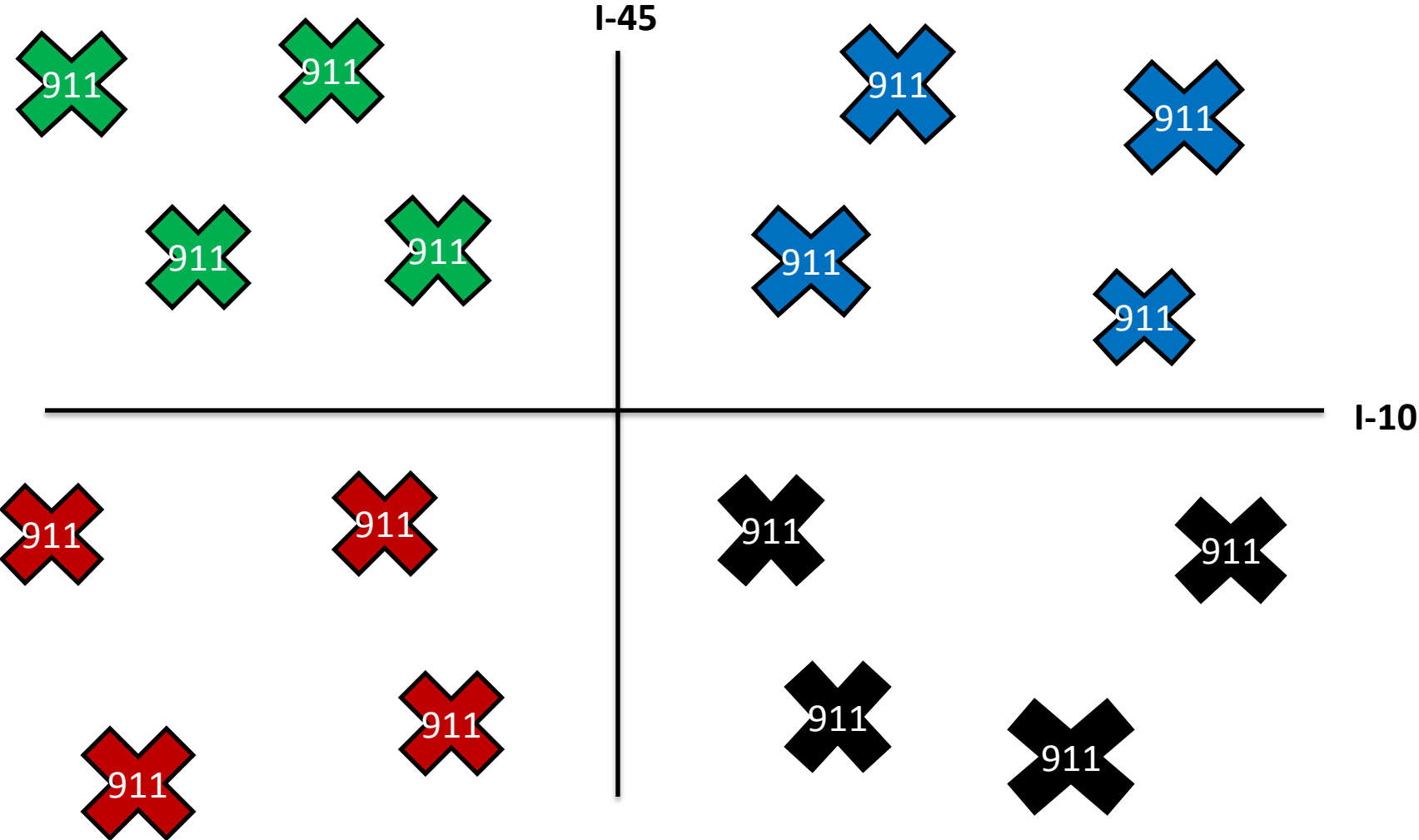


Initial Staging Points

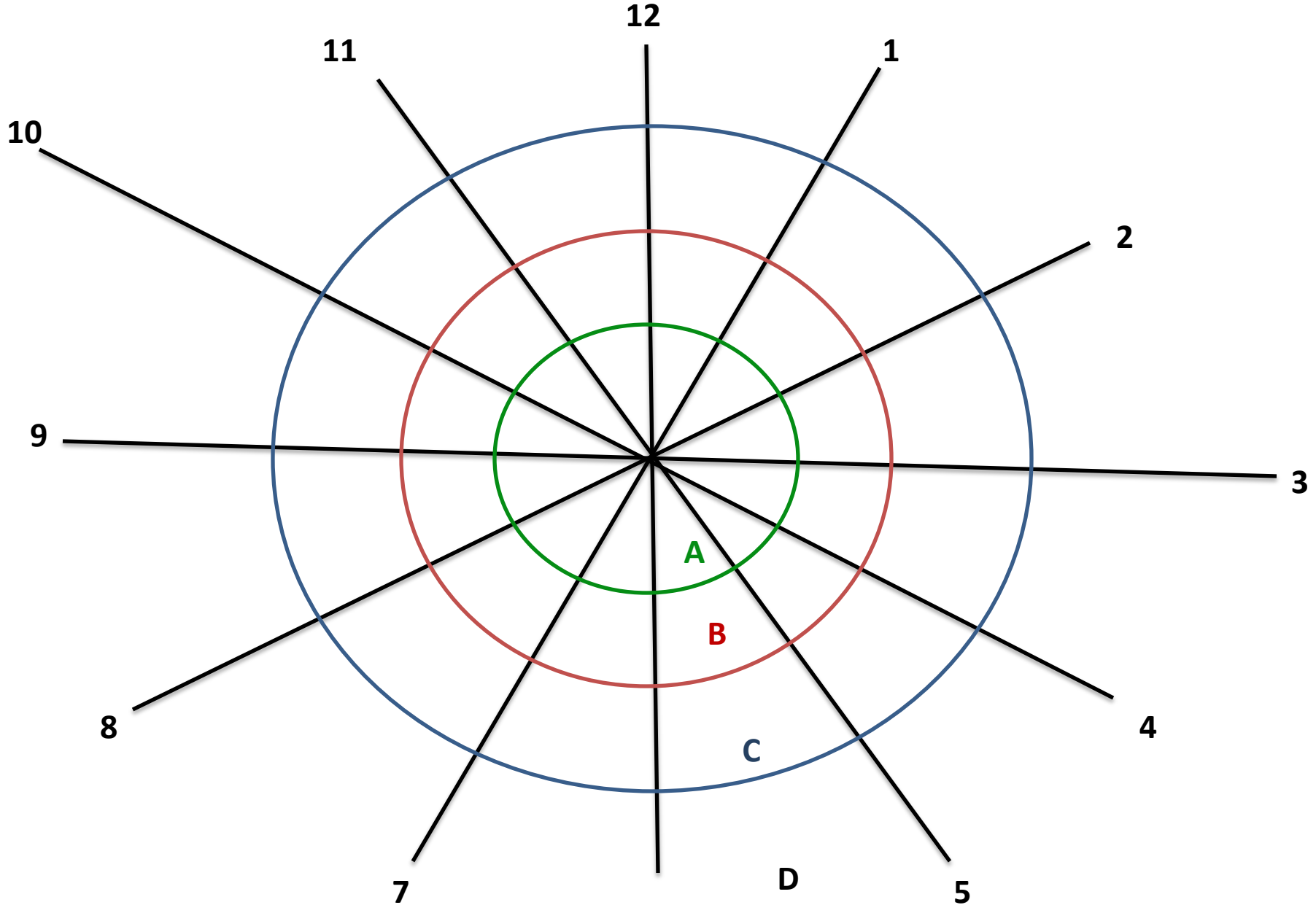
Option 1 – Freeway Corridors?



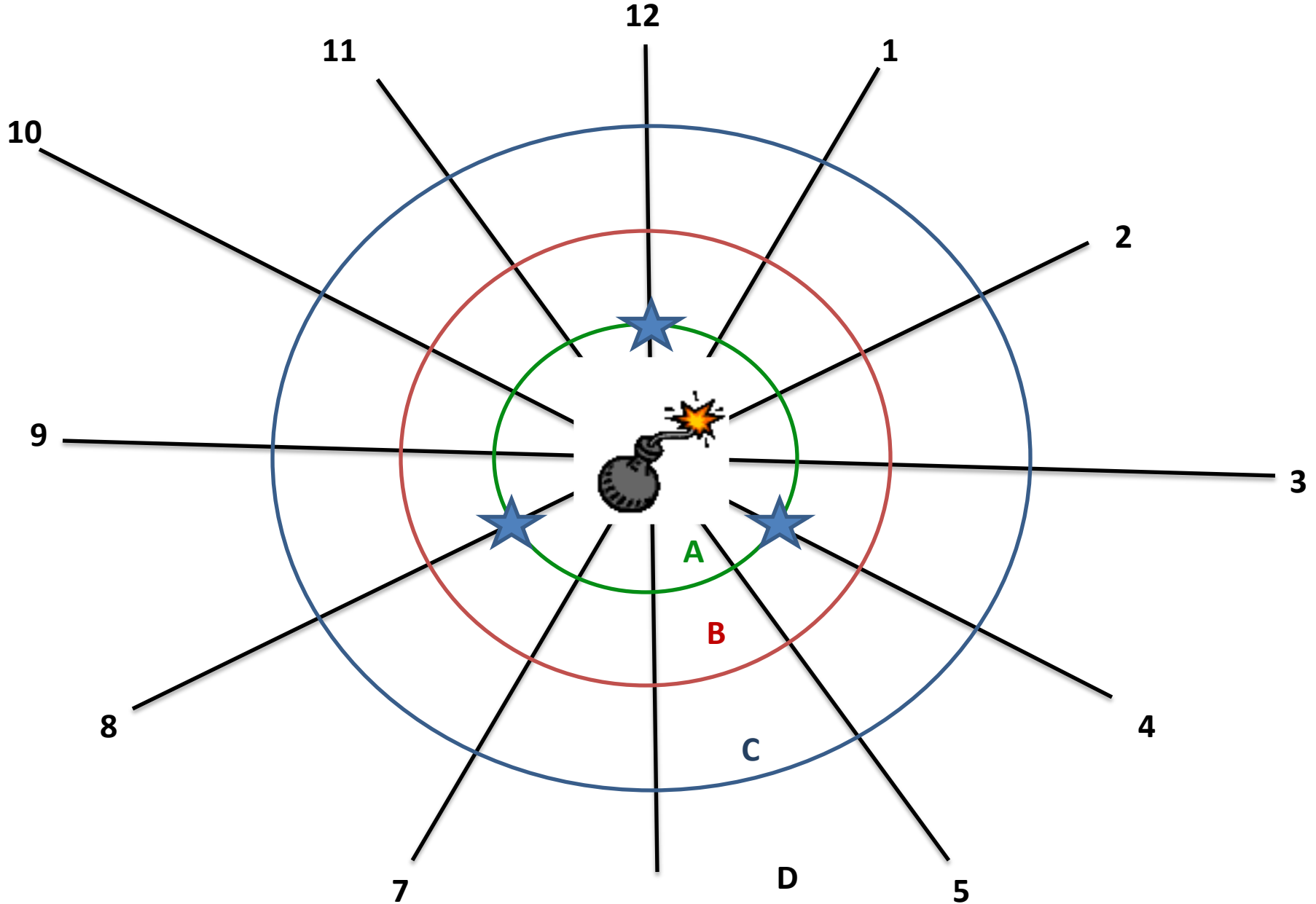
Staging Option 2 – Service Areas?



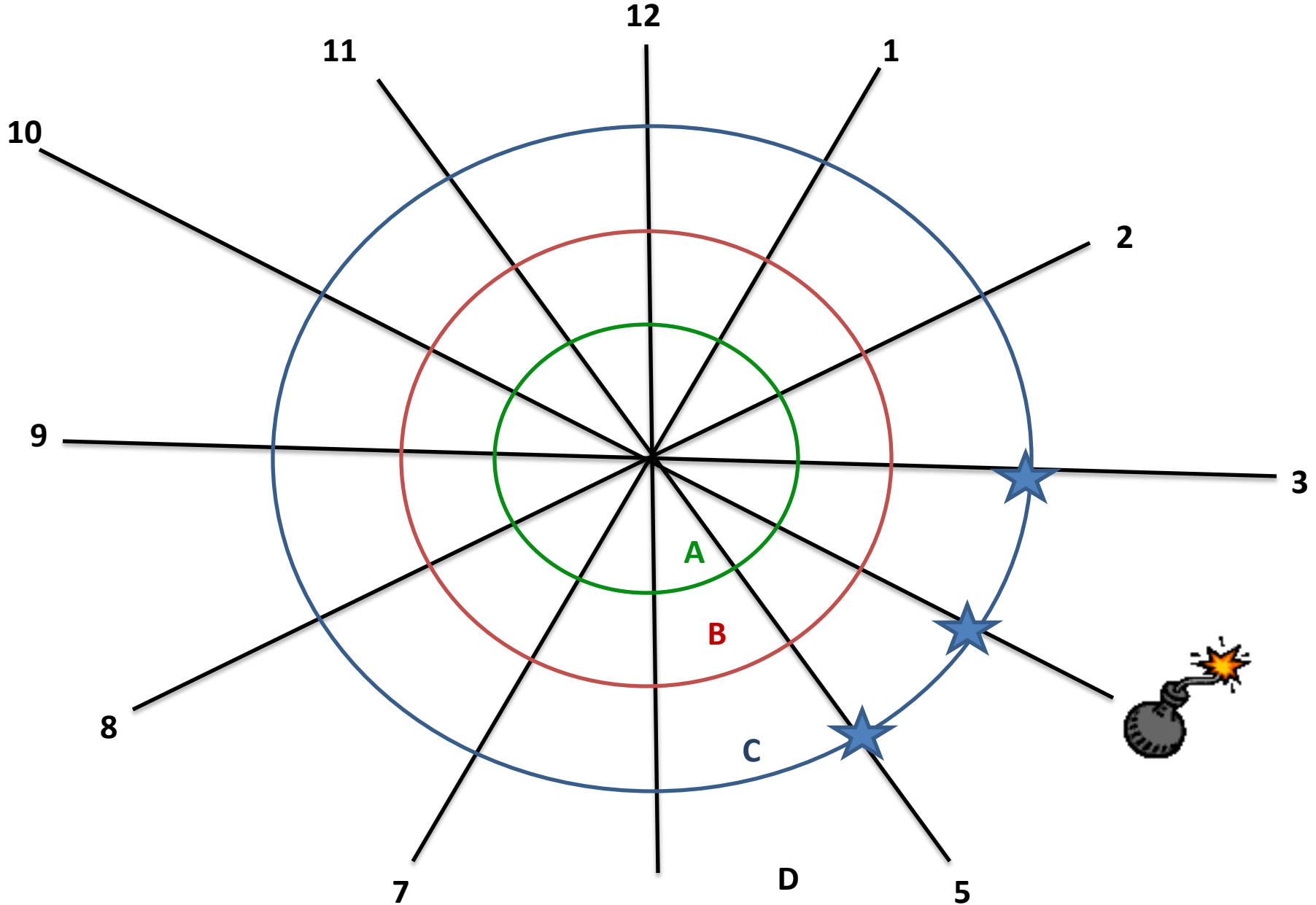
Labeling Model?



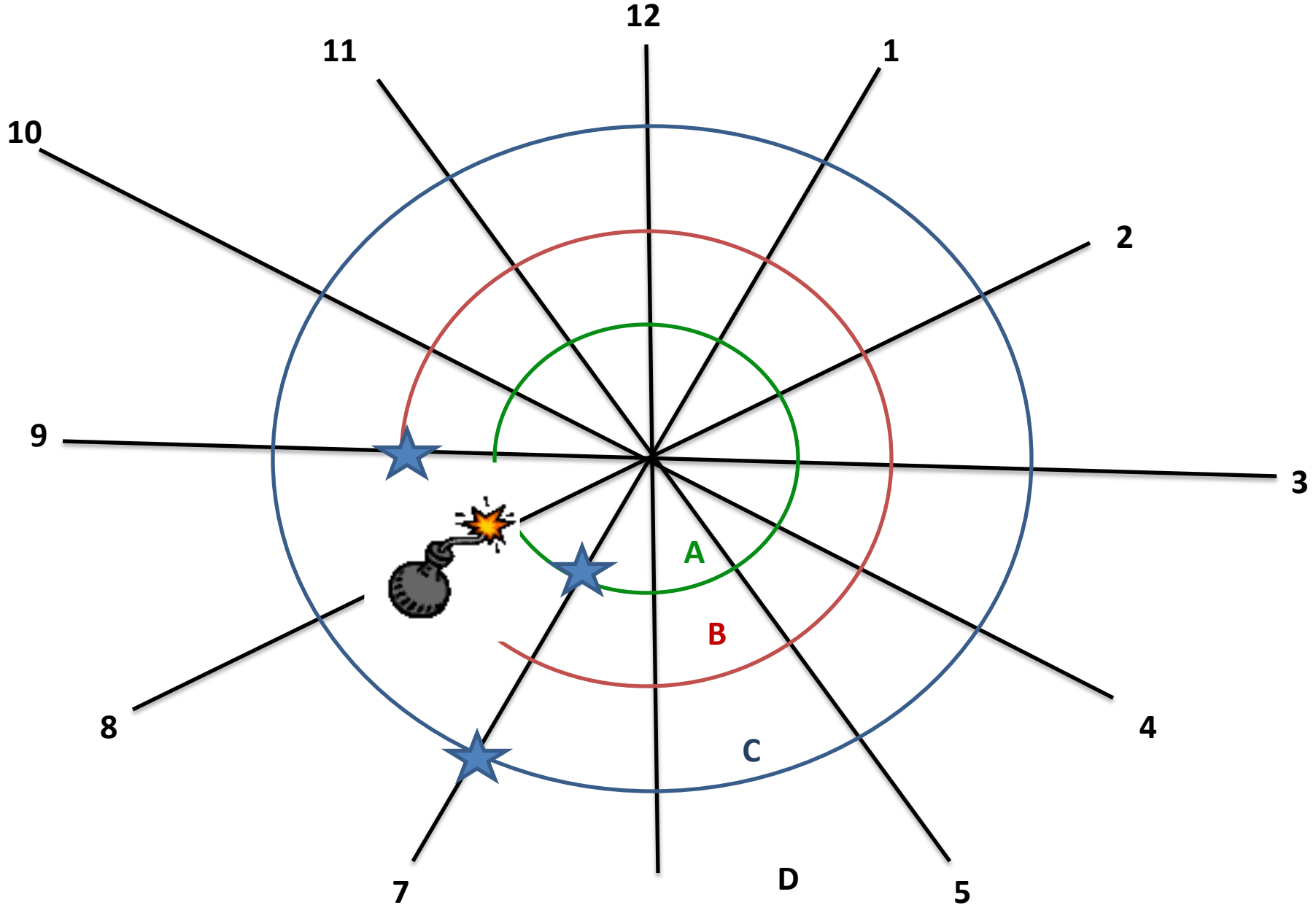
Example 1



Example 2

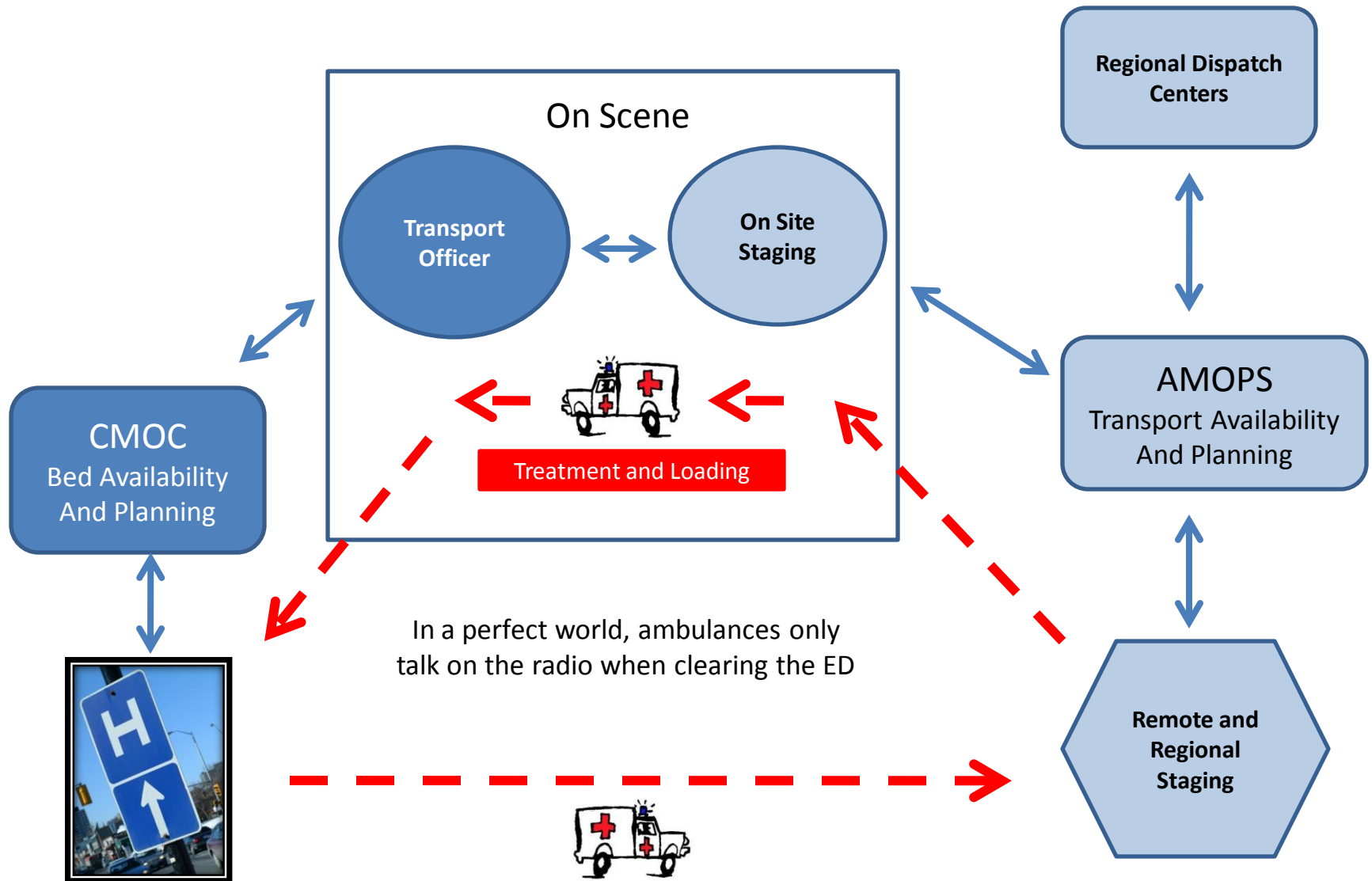


Example 3



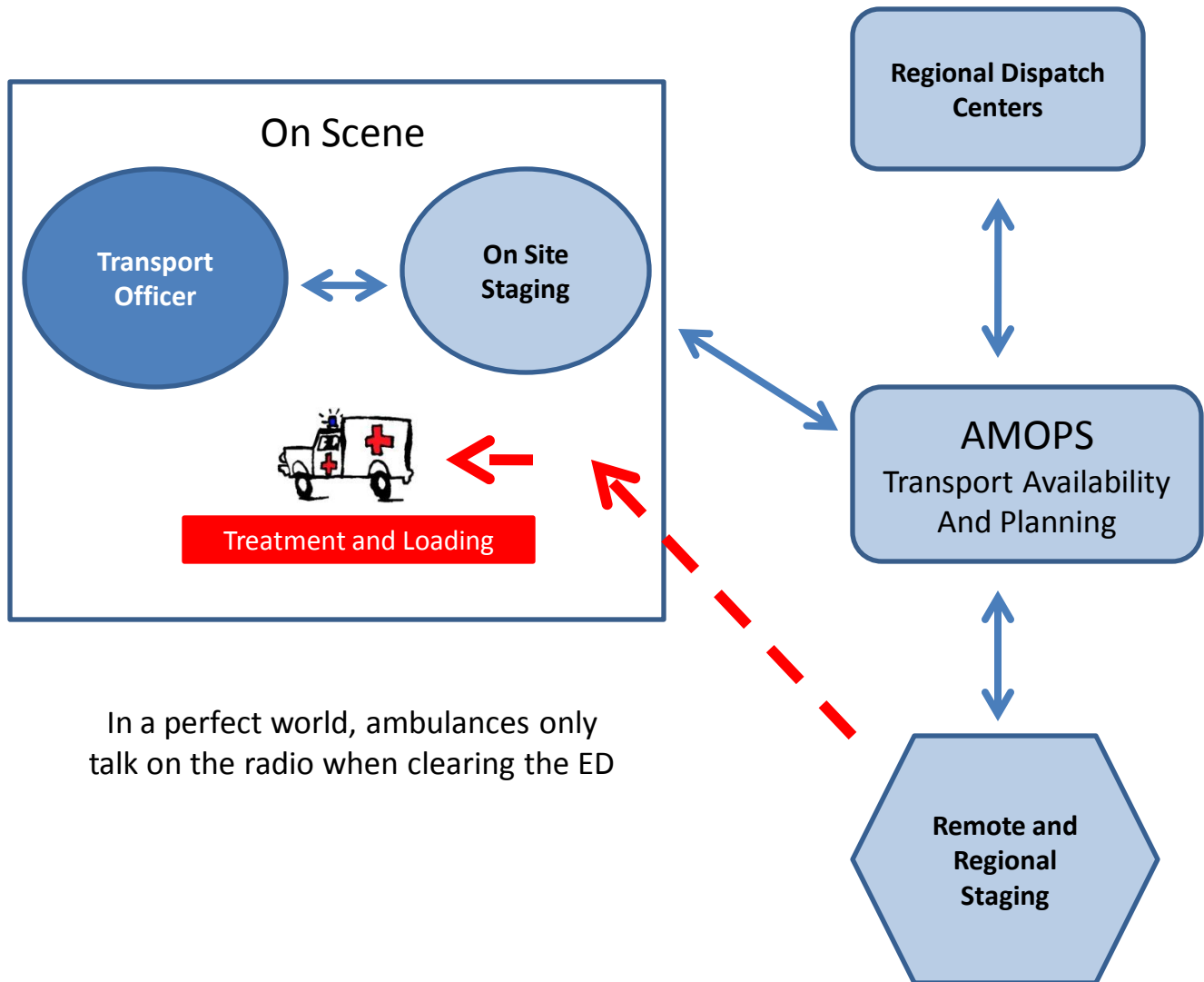
Communication Flowchart

(Assumes Unified Command Structure in place)



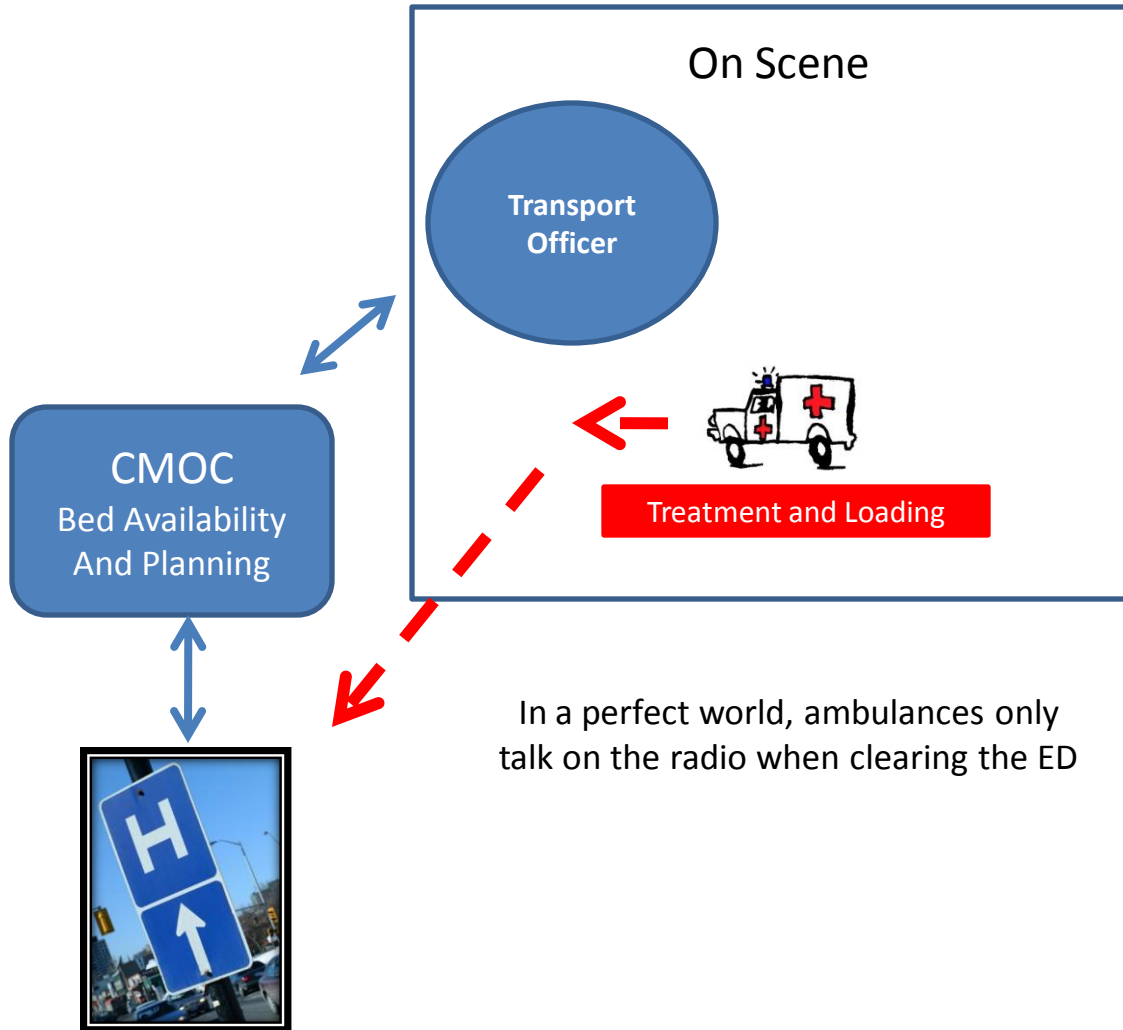
Resource Communication Flowchart

“AMOPS”
New Concept
Potential hub:
1. Resource
Coordination
2. Planning activity



In a perfect world, ambulances only talk on the radio when clearing the ED

Bed Availability and Destination Communication



Question:
Who should assign destination?

1. CMOC
2. Transport Officer
3. Ambulance Paramedic

In a perfect world, ambulances only talk on the radio when clearing the ED

Tasks Ahead

- Identify Regional Dispatch Centers
- Develop Communication Plan
- Define Strike Teams/Task Forces
- Identify Preplanned Staging Areas
- Identify Equipment/Supply Caches
- Develop Job Aids
- Logistical Support

Comments

- Web Site
 - <http://www.mchd-tx.org/emsplanning.htm>
 - Survey Monkey
 - EMS Service Resource/Asset Questionnaire

Contact us at
EMSPlanners@mchd-tx.org